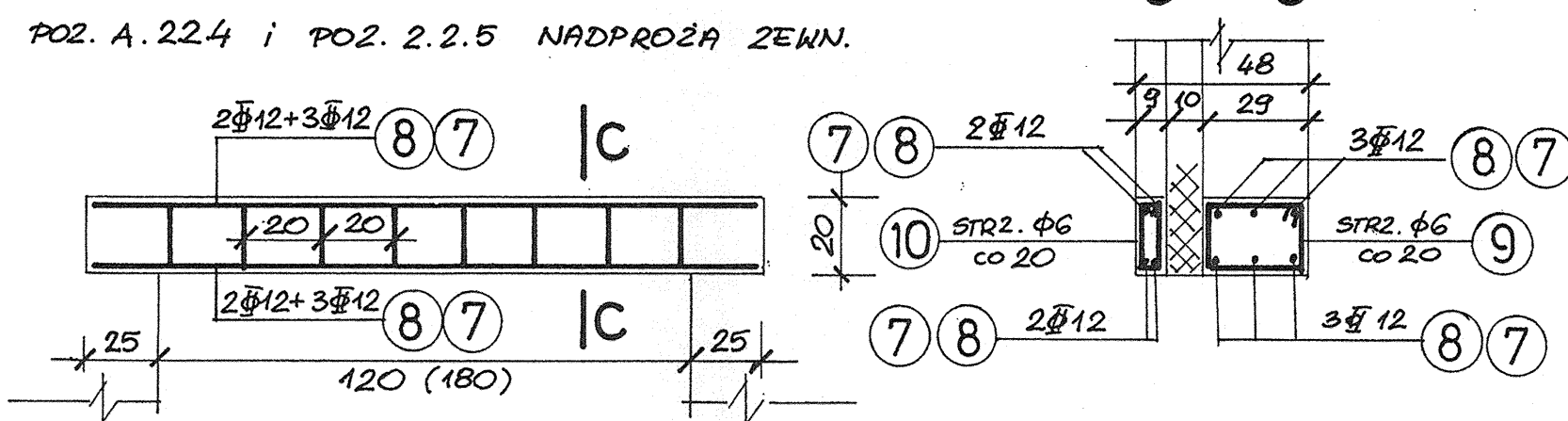
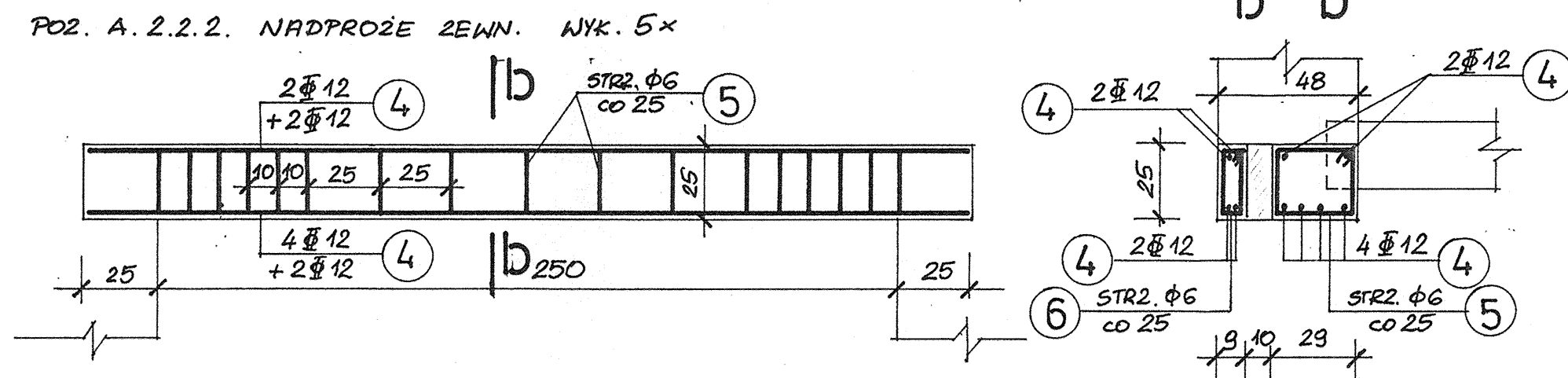
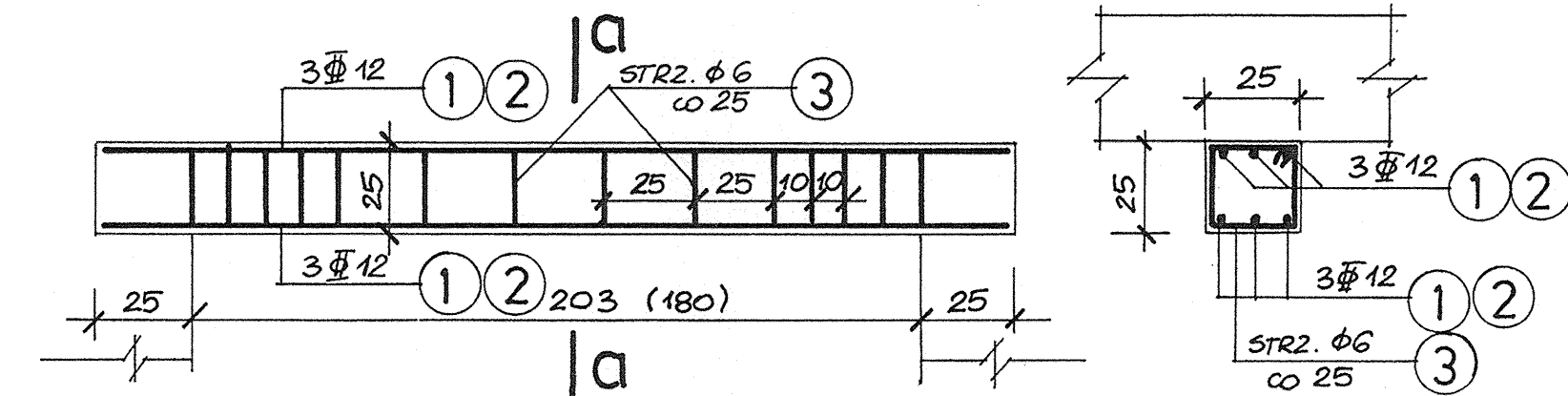
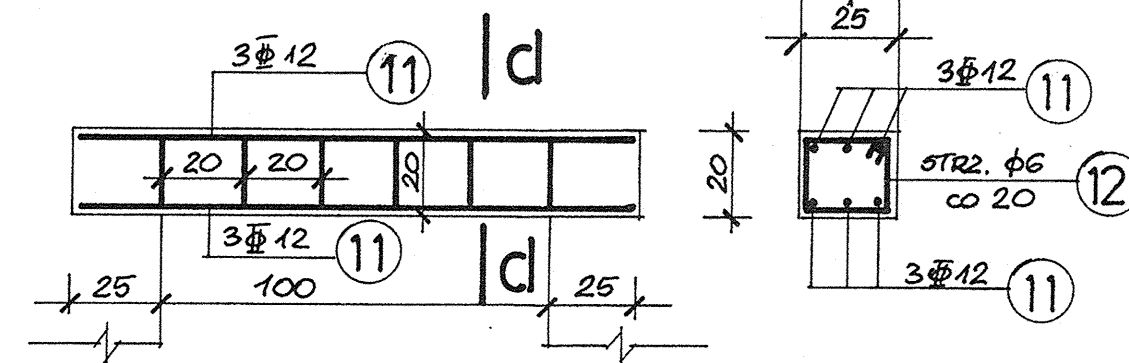


POZ. A. 2.2.1. PODCIĄG W KORYT. L=203 cm NYK. 6x
 POZ. B. 1.2.1. NADPROŻE L=180 cm NYK. 2x
 POZ. A. 2.2.3. NADPROŻE L=203 cm NYK. 1x
 POZ. A. 2.2.7. NADPROŻE L=180 cm NYK. 1x

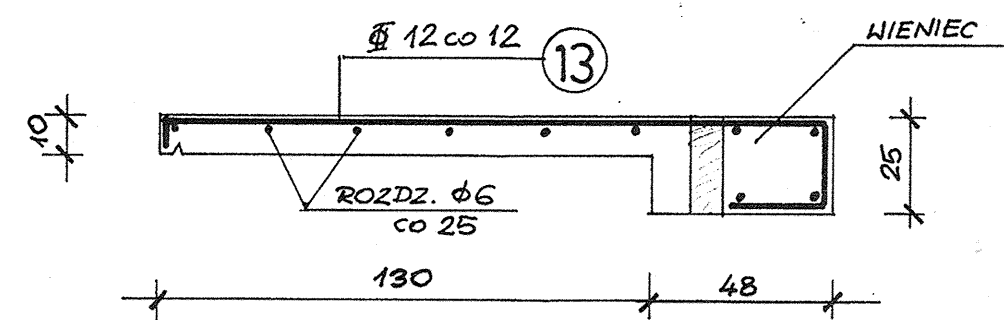


L=120 cm NYK. 2x
 L=180 cm NYK. 2x

POZ. A. 2.2.6. NADPROŻE WEWN. NYK. 6x



POZ. A. 2.1.5. ZADASZENIE 8,4 mb



BETON B-20
 STAL A-0
 STAL A-III

ZESTAWIENIE STALI

| NR | φ/Φ | SCHEMAT PRĘTA | DŁUG. ELEM. cm | ILOŚĆ SZT. | DŁ. CĄBK. m | |
|----------------------|-----|------------------|----------------|------------|-------------|-----------|
| | | | | | A-0 φ6 | A-III φ12 |
| 1. | φ12 | 250 | 250 | 42 | | 105 |
| 2. | φ12 | 220 | 220 | 18 | | 40 |
| 3. | φ6 | 22 22 5 5 22 22 | 98 | 140 | 137 | |
| 4. | φ12 | 290 | 290 | 50 | | 145 |
| 5. | φ6 | 24 22 15 5 22 24 | 102 | 85 | 87 | |
| 6. | φ6 | 6 22 15 5 22 6 | 66 | 85 | 56 | |
| 7. | φ12 | 160 | 160 | 20 | | 32 |
| 8. | φ12 | 220 | 220 | 20 | | 44 |
| 9. | φ6 | 24 18 5 5 18 24 | 94 | 16 | 15 | |
| 10. | φ6 | 6 18 5 5 18 6 | 58 | 16 | 10 | |
| 11. | φ12 | 140 | 140 | 36 | | 50 |
| 12. | φ6 | 22 18 5 5 18 22 | 90 | 36 | 33 | |
| 13. | φ12 | 18 177 20 22 | 227 | 70 | | 159 |
| PRĘTY ROZDZIELCZE φ6 | | | | | 50 | |
| DŁUGOŚĆ RAZEM | | | mb | | 388 | 575 |
| CIĘŻAR JEDNOSTKOWY | | | KG/mb | | 0,222 | 0,888 |
| CIĘŻAR RAZEM | | | KG | | 87 | 511 |

| | | | | | |
|----------------|--------------------------------|---------|--------|-------|---------|
| OBIEKT : | SALA GIMNASTYCZNA | | | | |
| ADRES : | PASZYN, GMINA CHEŁMIEC | | | | |
| OPRACOWANIE : | WYKONAWCZE - ELEMENTY WYLEWANE | | | | |
| INWESTOR : | URZĄD GMINY CHEŁMIEC | | | | |
| AUTOR OPRAC. : | PODPIS | NR UPR. | DATA | SKALA | NR RYS. |
| MGR INŻ. | | 7/64 | V/2003 | 1:20 | 6. |
| STAN. SZEWCZYK | | | | | |